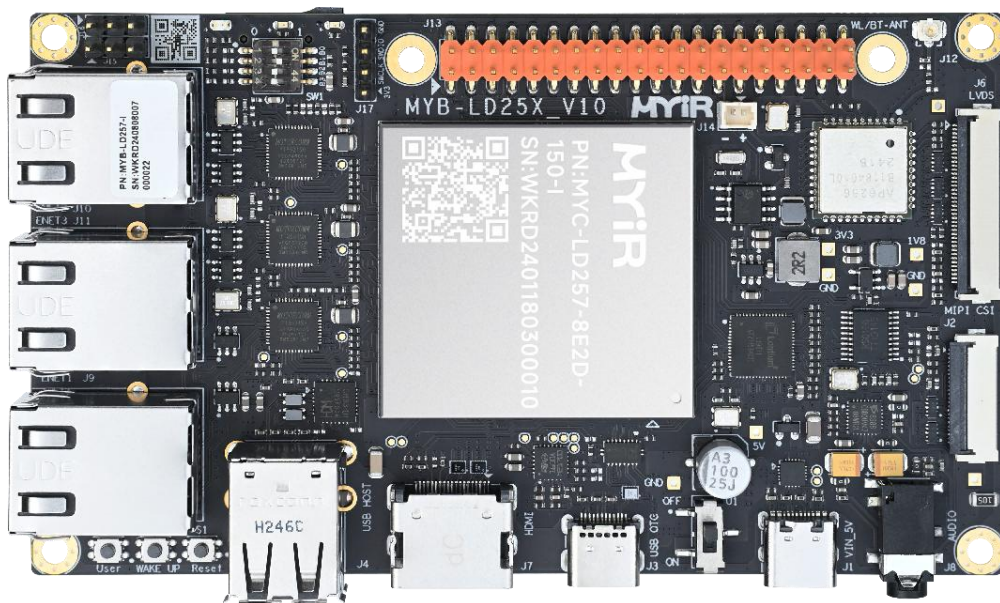


MYD-LD25X/MYD-LF25X Development Board Overview



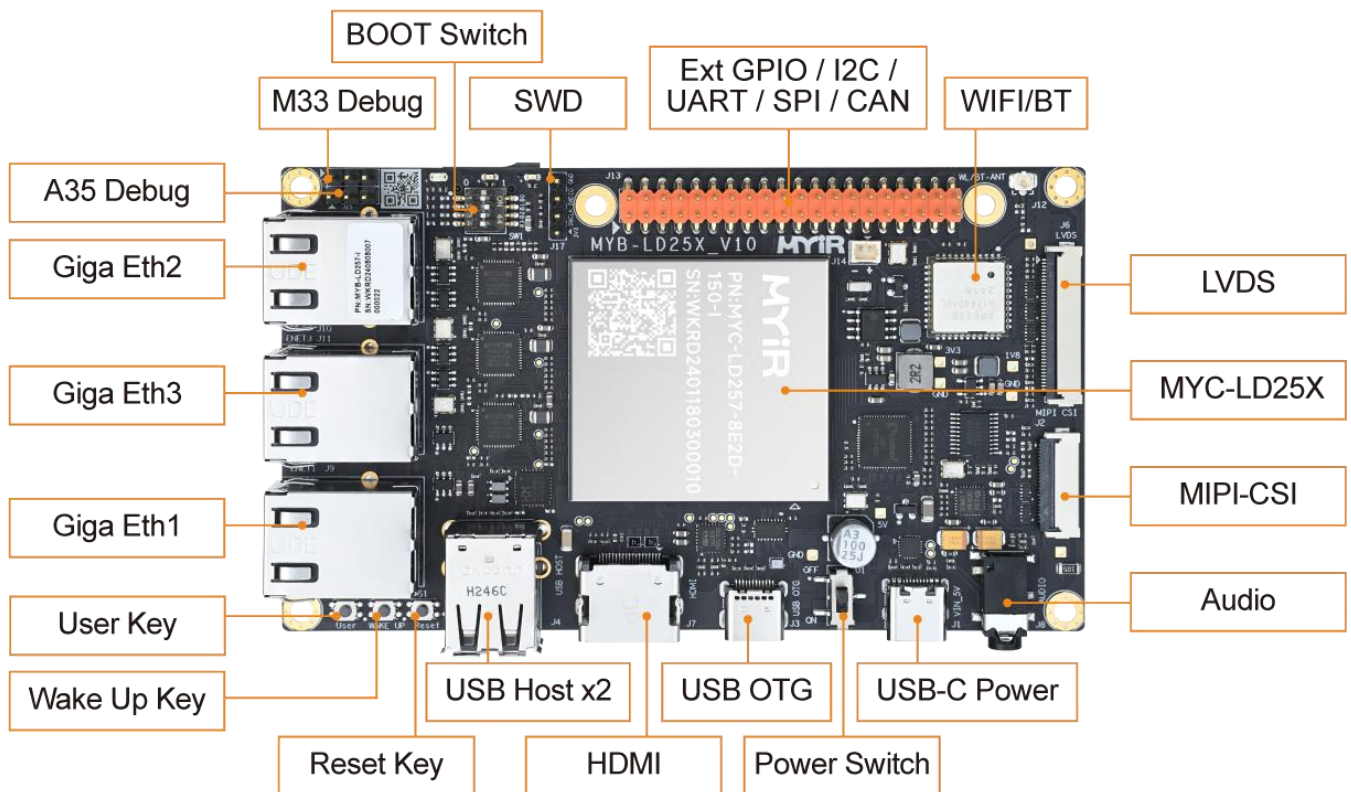
- ✓ MYC-LD25X/MYC-LF25X SOM as Controller Board
- ✓ ST STM32MP257 Processor (STM32MP257DAK3/STM32MP257FAK3)
- ✓ 1.5GHz Dual ARM Cortex-A35 and 400MHz Cortex-M33 Cores
- ✓ Neural Processing Unit (NPU) with 1.35 TOPS and 3D Graphics Processing Unit (GPU)
- ✓ 1GB/2GB LPDDR4, 8GB eMMC, 256Kbit EEPROM
- ✓ 1x USB2.0 OTG, 2x USB2.0 HOST, 3x Gigabit Ethernet, WiFi/Bluetooth, 1x Micro SD Card Slot
- ✓ LVDS, HDMI, MIPI-CSI, Audio Input/Output
- ✓ Supports Linux (for both MYC-LD25X and MYC-LF25X) and Debian (for MYC-LD25X Only)
- ✓ Optional 7-inch LCD Module, Camera Module and RPI Module (RS232/RS485/CAN)



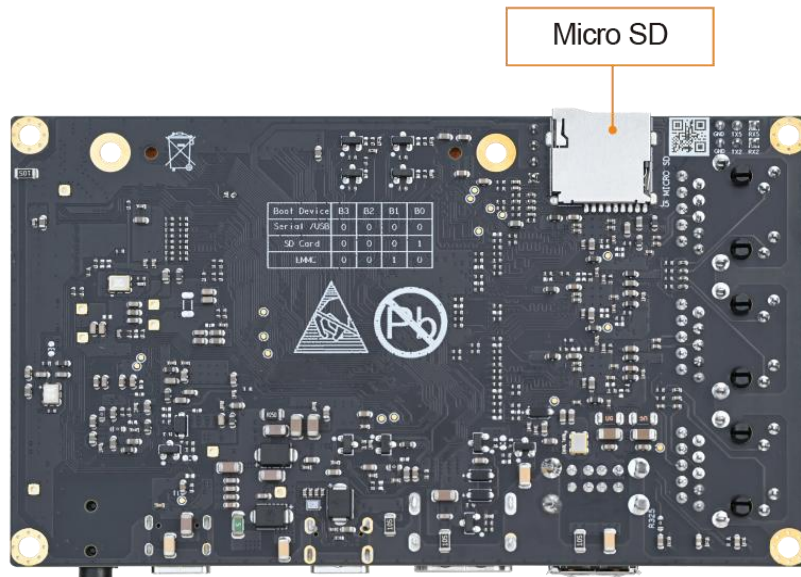
The [MYD-LD25X/MYD-LF25X Development Board](#) is a comprehensive evaluation platform tailored for the [ST STM32MP257](#) processor (STM32MP257DAK3 for MYD-LD25X and STM32MP257FAK3 for MYD-LF25X). This processor is based on dual Arm Cortex-A35 cores operating at up to 1.5 GHz and a Cortex-M33 core running at 400 MHz. It features 3 Ethernet ports, 3 FDCAN interfaces, a 1.35TOPs NPU, a 3D GPU, LVDS/DSI display interfaces, and H.264 encoding/decoding capabilities, making it ideal for Industry 4.0 and advanced edge computing applications that require high-end multimedia capabilities.

The MYD-LD25X/MYD-LF25X Development Board is built around the MYC-LD25X/MYC-LF25X System-On-Module (SOM), leveraging the 252-pin LGA expansion interface to expose the extensive features of the STM32MP257D Processor to its base board. Operating on a 5V/3A USB power supply, the board boasts a rich set of peripherals, including 2x USB 2.0 Host ports, 1x USB 2.0 OTG, 3x Gigabit Ethernet interfaces, a Micro SD card slot, and an integrated WiFi/Bluetooth module. Additionally, it supports LVDS and HDMI display outputs, incorporates a MIPI-CSI interface, and provides an audio interface. Furthermore, the inclusion of a 2*20-pin Raspberry Pi (RPI) extension interface provides access to additional resources such as GPIO, I2C, UART, SPI, and CAN, enabling users to customize and enhance their development endeavors.

Both the MYD-LD25X and MYD-LF25X support Linux 6.1 operating systems. Meanwhile, the MYD-LD25X has also ported Debian 12, ensuring stable and efficient performance. MYIR provides abundant software resources, including kernel and driver source code, as well as detailed documentation and tools that facilitate rapid and easy development for users. These resources provide the necessary support to developers, enabling them to focus on creating innovative and exciting applications. It is suitable for a wide range of applications, including high-end industrial HMI, edge computing gateways, new energy charging stations, energy storage EMS systems, industrial automation PLCs, motion controllers, and more. The board comes with a Quick Start Guide and one USB to TTL cable. MYIR also offers MY-LVDS070C 7-inch LCD Module, MY-CAM003M Camera Module and MY-WIREDCOM RPI Module as add-on options for the board.



Top-view of MYD-LD25X Development Board



Bottom-view of MYD-LD25X Development Board

Hardware Specification

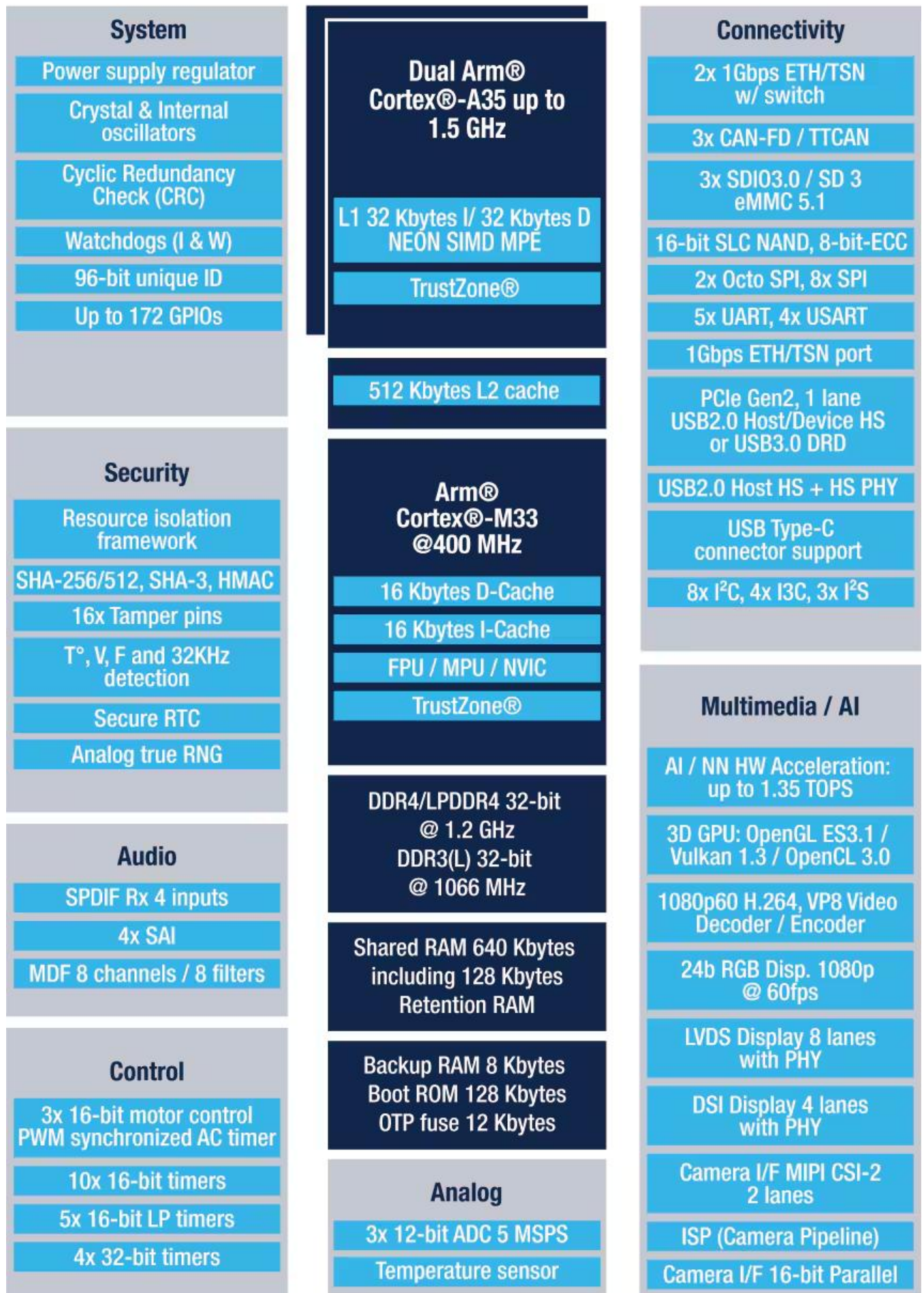
The MYC-LD25X/MYC-LF25X System-on-Module (SOM) mounted on the MYD-LD25X/MYD-LF25X Development Board uses the 14 x 14mm, 0.5mm ball pitch, 424-ball VFBGA packaged 1.5 GHz ST STM32MP257 microprocessor (STM32MP257DAK3/STM32MP257FAK3). This processor belongs to the ST STM32MP25x product line, which features a dual-core Arm Cortex-A35 (operating at up to 1.5 GHz) and a single-core Arm Cortex-M33 (running at up to 400 MHz). Additionally, it includes a neural processing unit (NPU) with 1.35 TOPS and a 3D graphics processing unit (GPU). The processor is further enhanced with an integrated video encoder and decoder. A rich set of interfaces is supported by the processor, such as three Ethernet ports with switch and TSN capabilities, FD-CAN, PCIe/USB3.0, and others. It also supports Parallel and MIPI CSI-2 for camera connections and Parallel, LVDS, and MIPI DSI for display connectivity. These features make STM32MP25x devices well-suited for a wide range of consumer, industrial, white goods and medical applications.



All security features activated.

Note: Packages can support low-cost PCB down to a 4-layer PTH

STM32MP257 Application Processors



STM32MP257 Circuit Diagram

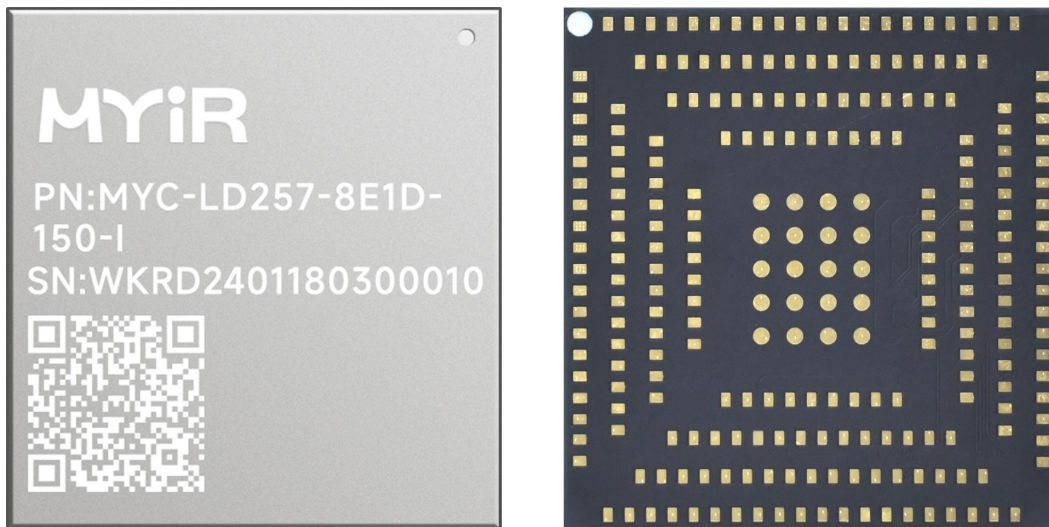


The MYD-LD25X/MYD-LF25X Development Board is using the MYC-LD25X/MYC-LF25X SOM as core controller board. It takes full features of ST STM32MP257 processor and the main features are characterized as below:

Mechanical Parameters

- Dimensions: 120mm x 70mm (base board), 37mm x 39mm (SOM)
- PCB Layers: 6-layer design (base board), 12-layer design (SOM)
- Power supply: +5V/3A (base board), +5V/3A (SOM)
- Working temperature: -40~85 Celsius (industrial grade)
(WiFi/BT Module: -30~85 Celsius)

The MYD-LD25X/MYD-LF25X Controller Board (MYC-LD25X/MYC-LF25X SOM)



MYC-LD25X Top-view and Bottom-view

Processor

- ST STM32MP257 Processor (STM32MP257DAK3 for MYC-LD25X, STM32MP257FAK3 for MYC-LF25X)
- - Dual-core Arm Cortex-A35 64-bit RISC core operating at up to 1.5 GHz
- - A Cortex-M33 32-bit RISC core operating at up to 400 MHz
- - Neural Processing Unit (NPU) operating at up to 1.35 TOPS, 3D GPU
- - H.264 encoding/decoding

Storage

- 1GB/2GB LPDDR4
- 8GB eMMC
- 256Kbit EEPROM

PMIC

- Power Management IC: STPMIC25APQR

Peripherals and Signals Routed to Pins

- 252-pin LGA Expansion Interface
 - 3x RGMII
 - 1x USB 2.0 HOST



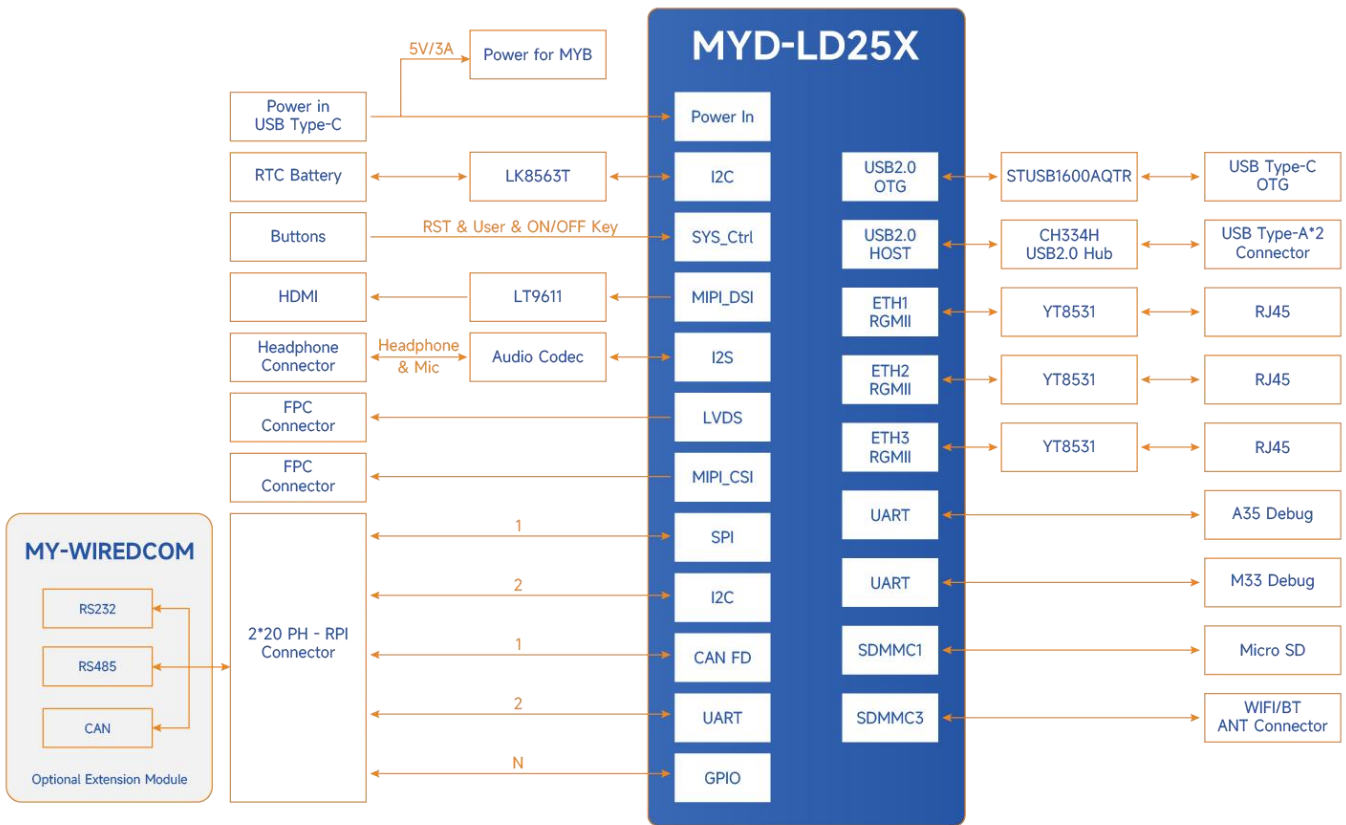
- 1x USB 3.0 OTG
- 4x USART
- 5x UART
- 8x SPI
- 7x I2C
- 4x I3C
- 3x CAN FD
- 2x SD/MCC
- 4x SAI
- 1x Parallel RGB
- 1x MIPI DSI
- 2x LVDS
- 1x MIPI CSI
- 1x DCMi
- 1x JTAG
- 1x SWD
- Up to 128x GPIOs

Note: the peripheral signals brought out to the expansion interface are listed in maximum number. Some signals are reused. Please refer to the processor datasheet and the SOM pinout description file.

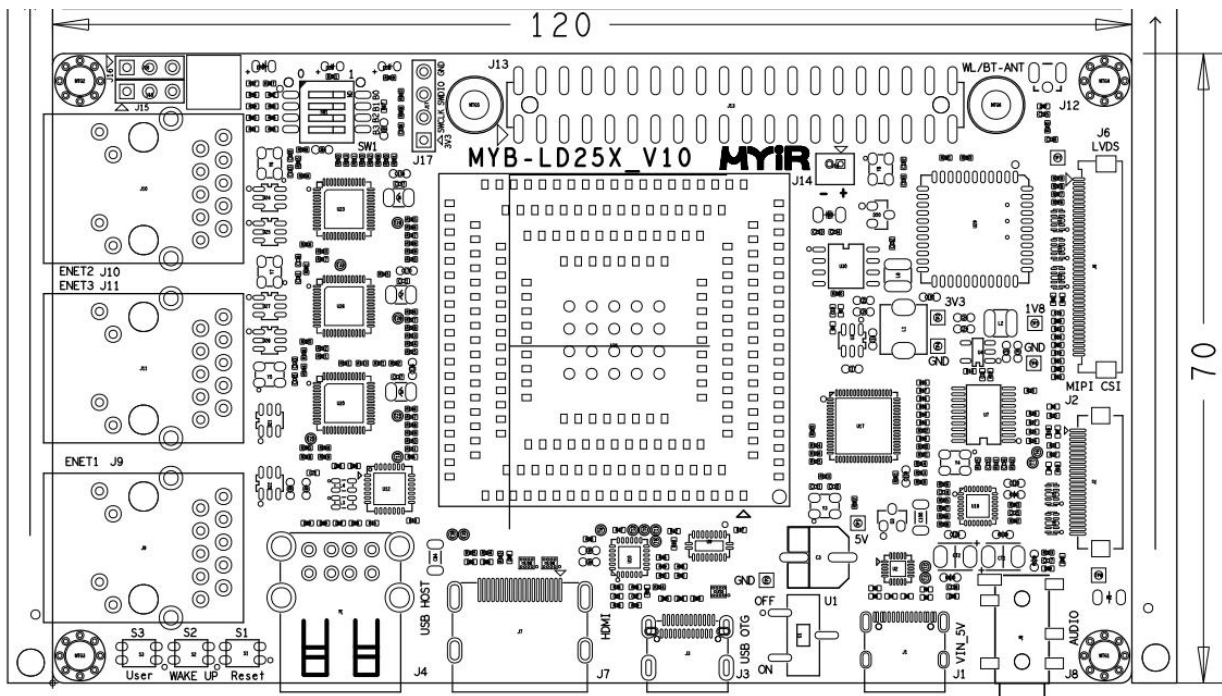
The MYD-LD25X/MYD-LF25X Development Board Base Board

- 5V/3A USB Power Supply (Type-C)
- 1x Power Switch
- 1x BOOT Switch
- 3x Buttons (1x USER, 1x Wake Up, 1x Reset)
- 3x Debug Serial Ports (one for Cortex-A35, one for Cortex-M33 and one for SWD)
- 2x USB 2.0 Host ports
- 1x USB 2.0 OTG port
- 3x 10/100/1000Mbps Ethernet interfaces
- 1x WiFi/BT Module (complies with IEEE 802.11 a/b/g/n/ac standard and supports Bluetooth V5.2)
- 1x Micro SD Card Slot
- 1x LVDS Display Interface
- 1x HDMI Display Interface
- 1x MIPI-CSI Camera Interface
- 1x Audio Input and Output Interface
- 1x 2.54mm 2 x 20-pin male expansion header
(RPI interface, GPIO/I2C/UART/SPI/CAN, compatible with Raspberry PI standard 40-pin extension interface)

*Supports MYiR's **MY-WIREDCOM RPI Module** to extend RS485, RS232 and CAN functions*



MYD-LD25X Function Block Diagram



MYD-LD25X Dimensions Chart (Unit: MM)



Software Features

The MYD-LD25X/MYD-LF25X System-On-Module supports Linux. Meanwhile, the MYC-LD25X has also ported Debian OS, and comes with comprehensive software packages. To assist clients in accelerating their projects, the kernel and various peripheral drivers are provided in source code format. Here is a brief overview of the key software features:

Item	Features	Features	Source Code
Bootloader	TFA	First bootloader 2.10.5	YES
	U-boot	The second boot program uboot_2023.10	YES
Linux kernel	Linux kernel	Customized based on official kernel_6.6.48 version	YES
Device driver	EEPROM	BL24C256A driver	YES
	USB Host	USB Host driver	YES
	USB OTG	USB OTG driver	YES
	I2C	I2C bus driver	YES
	SPI	SPI bus driver	YES
	Ethernet	YT8531SH-CA driver	YES
	LVDS	LVDS display driver	YES
	HDMI	LT9611 driver	YES
	Audio	ES8388 Audio Driver	YES
	MIPI CSI	OV5640	YES
	RTC	LK8563T driver	YES
	GPIO	General purpose GPIO driver	YES
	UART	RS232/RS485 driver	YES
	CAN	CAN driver	YES
	WiFi	AP6256 driver	YES
BT	AP6256 driver	YES	
File system (MYC-LD25X)	myir-image-core	Image without GUI interface built with Yocto that supports rt Linux	YES
	myir-image-full	A fully functional QT and HMI image built with Yocto	YES
	myir-image-debian	Image built with debian system	YES
File system	myir-image-full	A fully functional QT and HMI image built with Yocto	YES

MYD-LD25X Software Features



Order Information

Product Item	Part No.	Packing List
MYD-LD25X Development Board	MYD-LD257-8E1D-150-I	✓ One MYD-LD25X Development Board (including MYC-LD25X SOM)
	MYD-LD257-8E2D-150-I	✓ One USB-to-TTL cable ✓ One Quick Start Guide
MYD-LF25X Development Board	MYD-LF257-8E1D-150-I	✓ One MYD-LF25X Development Board (including MYC-LF25X SOM) ✓ One USB-to-TTL cable ✓ One Quick Start Guide
MYC-LD25X System-On-Module	MYC-LD257-8E1D-150-I	✓ One MYC-LD25X SOM
	MYC-LD257-8E2D-150-I	
MYC-LF25X System-On-Module	MYC-LF257-8E1D-150-I	✓ One MYC-LF25X SOM
MY-LVDS070C LCD Module	MY-LVDS070C	Add-on Options ✓ MY-LVDS070C LCD Module ✓ MY-CAM003M Camera Module ✓ MY-WIREDCOM RPI Module
MY-CAM003M Camera Module	MY-CAM003M	
MY-WIREDCOM RPI Module	MY-WIREDCOM	
<p><i>Note:</i></p> <ol style="list-style-type: none"> One MYD-LD25X/MYD-LF25X Development Board comprises one MYC-LD25X/MYC-LF25X SOM mounted onto the base board. If you require additional SOMs, you may place order for extras. Bulk discounts are available. For inquiries, kindly contact MYIR. We cater to custom design requests based on the MYD-LD25X/MYD-LF25X, whether it involves reducing, adding or modifying the existing hardware components to suit the customers' specific needs. 		



MYIR Electronics Limited

Headquarter Address: Room 04, 6th Floor, Building No.2, Fada Road, Yunli Smart Park, Bantian, Longgang District, Shenzhen, Guangdong, China 518129

Factory Address: Room 201, Block C, Shengjianli Industrial Park, Dafu Industrial Zone, Guanlan, Longhua District, Shenzhen, 518110, China

Website: en.myir.cn

Email: sales@myir.cn

Tel: +86-755-22984836