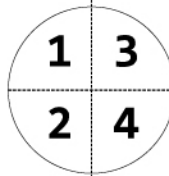
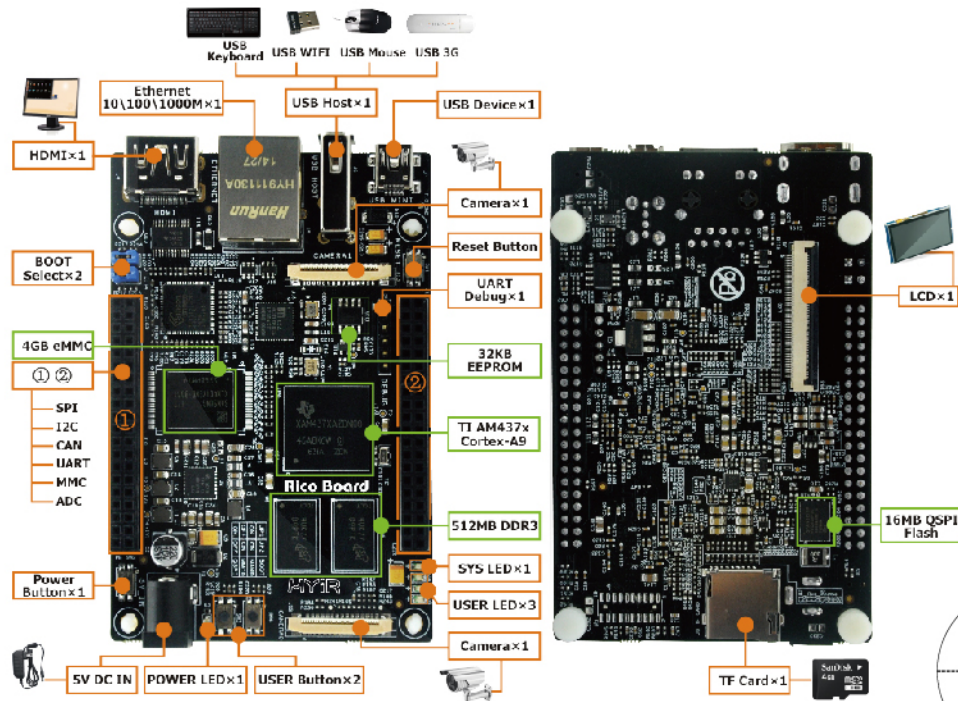
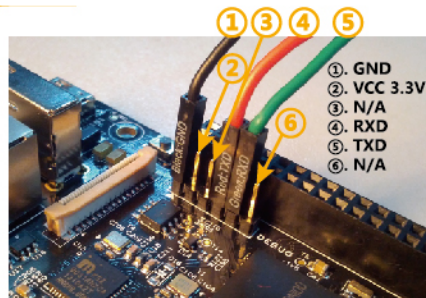
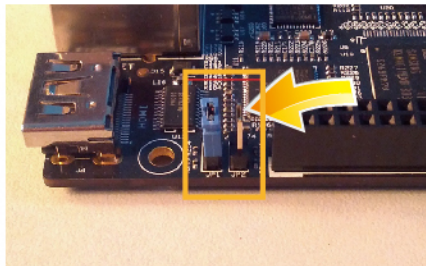


## Interfaces



## Quick Start

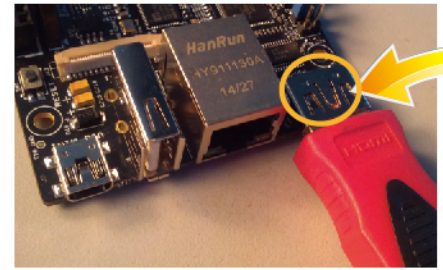


### STEP 1

To set Qual-SPI Boot Mode through jumpers:  
JP1: Close  
JP2: Open

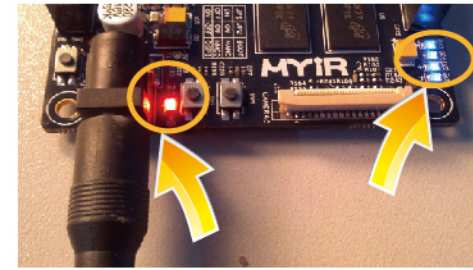
### STEP 2

Use UART cable to connect development board J2 interface (TTL voltage) with PC UART port. We recommend you to use MYIR's USB to UART converter MY-UART012U. The driver can be found in Product CD or downloaded from:  
<http://www.ftdichip.com/Products/ICs/FT230X.html>



### STEP 3

You can select HDMI or LCD Display (LCD interface J9 on bottom side). But HDMI and LCD can not be used at the same time.

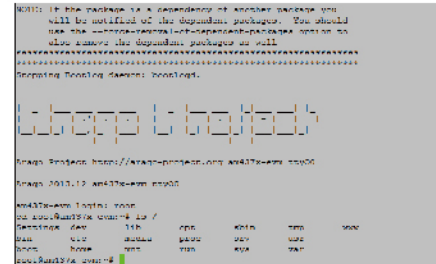


### STEP 4

Power ON the board  
If the power indicator D3 and blue status LED are both lighting, the board is working normally.

### STEP 5

Open Serial Terminal on Host.  
Set the parameters:  
Baud: 115200, Data bits: 8,  
Stop bits: 1, Parity: none,  
Flow control: none.  
You can see the print info as below.  
Login: root  
No Password



### STEP 6

After the system loaded, it will launch in Matrix Gui Desktop. Then you can continue to get more guide information through our Product CD, online wiki and forums.

